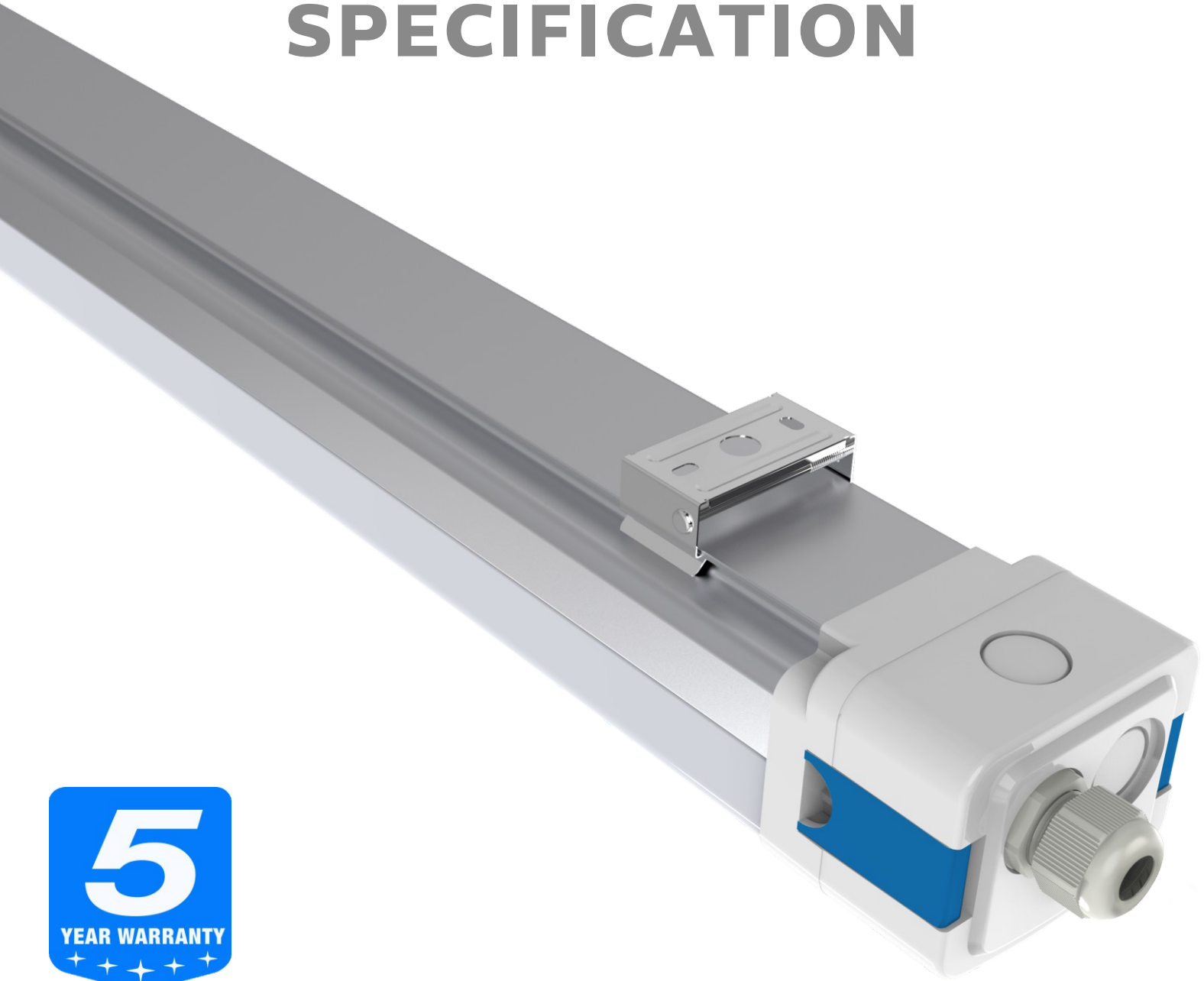


# SPECIFICATION



## **D5 LED TRIPROOF LIGHT**

(Buckle End-cap for Easy Installation)

## Features



# DUALRAYS

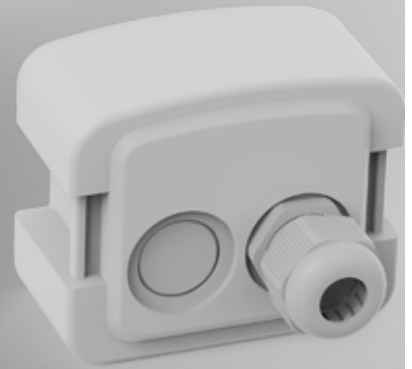
Intelligent . Healthy . Efficient



## D5 LED TRIPROF LIGHT

### Buckle End-cap for Easy Installation

- 1/2 Al Housing + 1/2 PC Cover, Excellent Thermal Conductivity; 160LPW Efficiency;
- Tri-Color optional (A: 3000-4000-5000K; B: 3000-4500-6000K; C: 4000-5000-6000K);
- Single Phase (L/N/E) or Three Phase (L1/L2/L3/N/FG) Optional;
- DIP Switch Power Adjustment Optional;
- L70/B20 @ 62.000h;



- > High Brightness SAN'AN SMD2835 LEDs, BOKE High PF Flicker-free Driver DIP Switch Power Adjustment Optional;
- > Buckle Design End-cap, Quick & Convenient to Open and Relock for Wiring, Greatly Improve Efficiency And Save Labor Cost;
- > 1/2 Al Housing + 1/2 PC Cover, Excellent Thermal Conductivity;
- > IP65 / IK10 Protection;
- > 120° beam angle;
- > Single or Double Wiring Optional, Linkable Through Single or Double End Wiring;
- > Multiple Installations: Suspension, Wall Mounting;
- > Various intelligent control: 1-10V, DALI, Motion sensor, Daylight sensor, Zigbee and Emergency;
- > No UV or IR and completely mercury free;

### Options:

- > Driver: BOKE fixed power driver, DIP switch power adjustable driver;
- > Controls and Dimming: Zigbee wireless control / 1-10V Dimming / Daylight sensor, Microwave sensor, Emergency;
- > Plug: European / Australia plug with 0.75mm<sup>2</sup>/1.5mm<sup>2</sup>/2.5mm<sup>2</sup> 3-pins or 5-pins (dimming) cable;
- > Installation : Suspension, Wall Mounting;
- > Wiring: Single or double wiring;

## Application

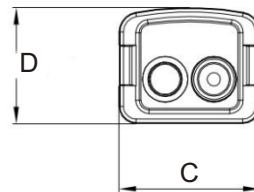
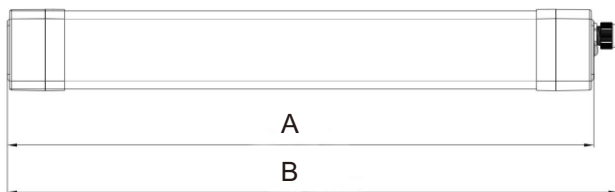
- > Replacement for fluorescent NCF;
- > Workshops and warehouse;
- > Garage and car parks;
- > Sport facility;
- > Corridor/Gallery/Corridor;
- > Outdoor & Indoor Locations;

# Technical Parameters

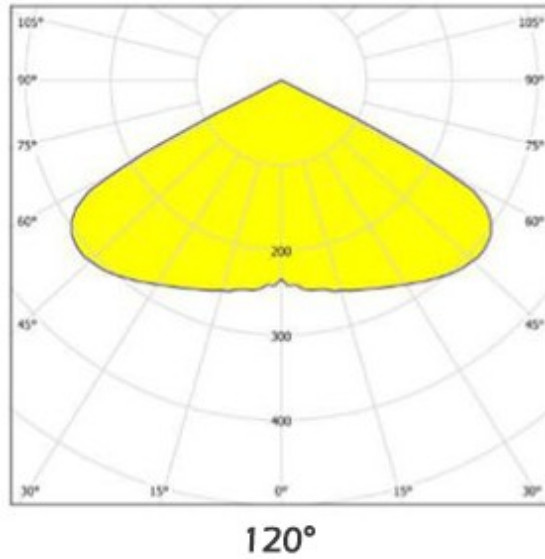
<b>Model No.</b>	DR-TP020-EG2XPX	DR-TP040-CG4XPX	DR-TP050-CG4XPX	DR-TP060-CG5XPX	DR-TP080-CG5XPX
<b>System Watts/W</b>	20W	40W	50W	60W	80W
<b>System Efficiency/LPW</b>	130LPW / 160LPW Optionl				
<b>Lumen Output/lm</b>	2.600/3.200±5%	5.200/6.400±5%	6.500/8.000±5%	7.800/9.600±5%	10.400/12.800±5
<b>Rated Input Voltage/V</b>	AC200~240V 50/60Hz (AC100~277V, 50/60Hz Optional)				
<b>LEDs Light Source</b>	SMD2835				
<b>SDCM</b>	<6				
<b>CCT/K</b>	5000K for Standard (3000K/4000K/5700K/6500K Optional)				
<b>CRI/Ra</b>	>80Ra (>70Ra for Option)				
<b>Power Factor</b>	>0.91				
<b>THD</b>	<10%				
<b>Beam Angle(Optional)</b>	120°				
<b>UGR</b>	<22				
<b>LED Driver</b>	BOKE Fixed Power/ DIP Switch Power Adjustable Optional				
<b>IP Rating</b>	IP65				
<b>IK Level</b>	IK08				
<b>Dimming(Optional)</b>	1-10V, DALI,Zigbee				
<b>Emergency(Optional)</b>	5W@3 Hours or Customized				
<b>Sensor (Optional)</b>	Daylight sensor/Microwave Sensor				
<b>Protection Class</b>	Class I				
<b>Finishing Color(Optional)</b>	RAL9016 Matt White				
<b>Material</b>	AL+PC				
<b>Lifespan/hrs</b>	62.000 Hrs (Ta=30°C@L70)				
<b>Operation Temp/°C</b>	-40°C to + 50°C(-40°F to 122°F)				
<b>Storage Temp/°C</b>	-40°C to + 65°C(-40°F to 149°F)				
<b>Installation</b>	Suspension / Ceiling Mounting Optional				
<b>Certificate</b>	CE(EMC+LVD),RoHS,ENEC ,SAA,RCM Available				

## Dimensions

Character/Length	2ft	4ft	5ft
<b>A</b>	605mm	1205mm	1505mm
<b>B</b>	630mm	1230mm	1530mm
<b>C</b>	84mm	84mm	84mm
<b>D</b>	69mm	69mm	69mm



# Photometry Diagram



## Installation

### Ceiling Mounted

- 1 Switch Off
- 2 Push and tighten screws with screwdriver.
- 3 Open buckle and separate it on both sides.
- 4 Install PG connector on one of the side.
- 5 Connect the input cable to the corresponding position on the terminal.
- 6 Close the end cap and tighten PG connector.
- 7 Install the luminaire with clips.
- 8 Turn on Switch

### Suspension

- 1 Push
- 2 Tighten the screw with screwdriver
- 3 Connect stainless cable to the screws and clips
- 4 Install the lamp

### INSTALLATION GUIDE

#### IMPORTANT SAFETY INFORMATION:

Please read all the instructions below before installation

- > Make sure that the supply voltage corresponds to the rated product voltage;
- > The product must be installed by a qualified electrician in accordance with the National Electrical Code and corresponding local codes.
- > If the product is damaged, do not use it!



**Turn Off Power Supply**

## Wiring Diagram

L	brown	black	Dimmable	
N	blue	white		
⊕ GND	yellow/green	green		
			DIM+	blue brown purple white
			DIM-	white blue gray black

**RISK OF PERSONAL INJURY – READ and follow all WARNINGS and installation instructions.**

Keep or give to the owner for future reference.

**Risk of cuts:** Wear gloves to prevent cuts or abrasions when removing from carton, handling, installing, and maintaining this product.

**Risk of electric shock:** This product must be installed in accordance with the applicable installation code by a person familiar with the construction and operation of the product and the hazards involved.

**Risk of Fire:** Minimum 194°F supply conductors. Consult a qualified electrician to ensure correct branch circuit conductor.

DUALWAYS® assumes no responsibility for claims arising out of improper or careless Installation or handling of this product.

## Packaging Information

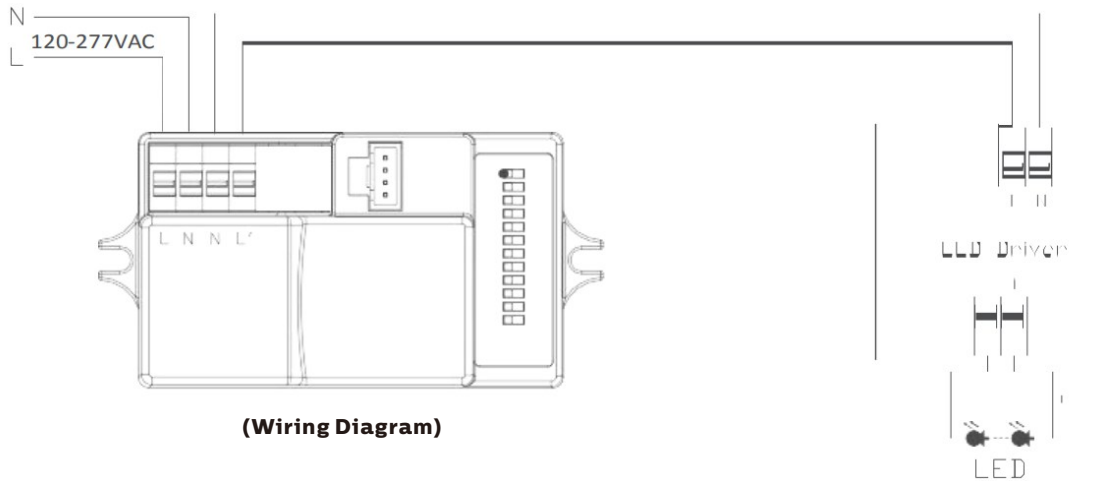
Model No.	Net Weight/Kg	Outer Carton Size/mm	Gross Weight/Kg	QTY"/CTN
DR-TP020-EG2XP	16.2	655*200*270	16.9	9PCS
DR-TP040-EG4XP	34.5	1255*200*230	35.8	9PCS
DR-TP050-EG4XP	35.4	1255*200*230	36.9	9PCS
DR-TP060-EG5XP	26.5	1555*200*230	27.8	6PCS
DR-TP080-EG5XP	26.2	1555*200*230	28.6	6PCS

## Emergency Introduction

Model No.	Emergency	Emergency Power/W	Battery Parameter
DR-TP020-CG2XX	3	5	12V/800mAhNi-co Lithium
DR-TP040/050-CG4XX	3	5	12V/800mAhNi-co Lithium
DR-TP060/080-BG5XX	3	5	12V/800mAhNi-co Lithium

## Microwave Sensor Introduction

### On/Off Version



## Function Introduction



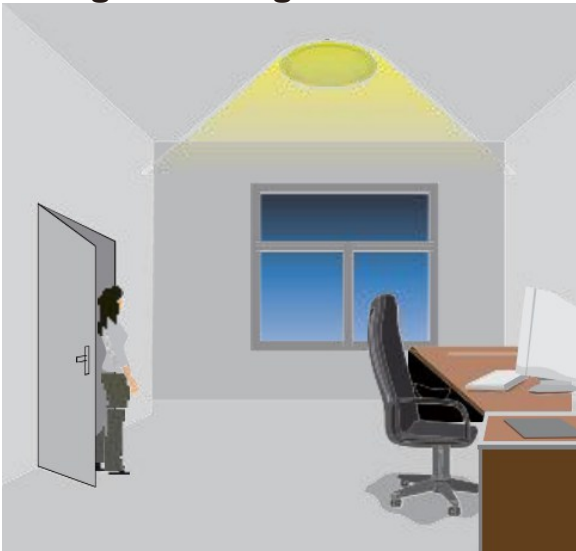
Light will turn on if any subject movement be detected within detection ranges.

- a. Standard hold time is 60s.
- b. Max detection range is 12x6m( $\phi$ xh).



Light will switch off after the hold time when no object movement within the detection ranges.

## 2 Stage Dimming Version



Light will turn on if any subject movement be detected within detection ranges.

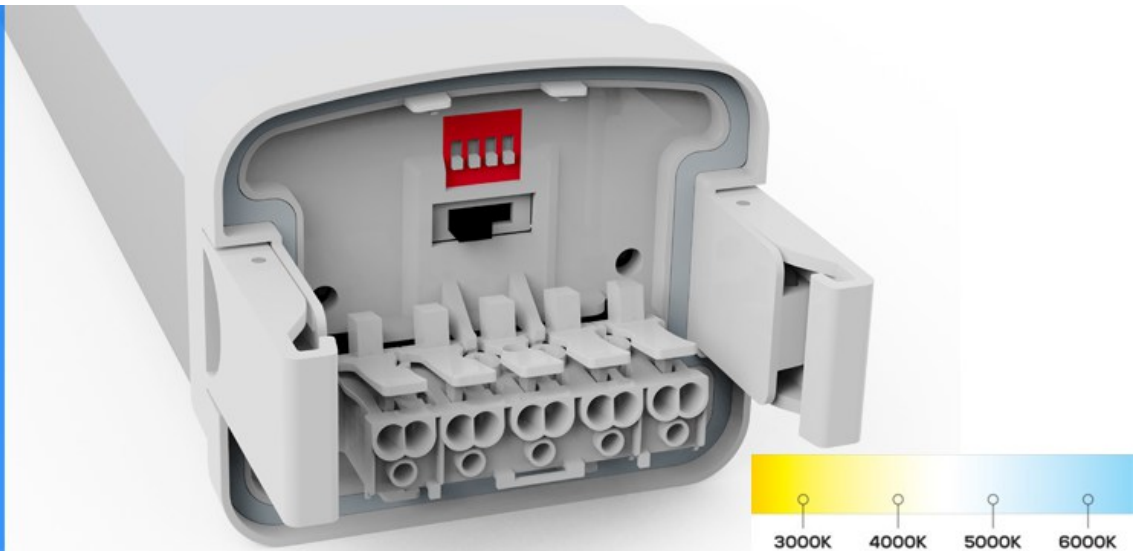
- a. Standard hold time is 60s.
- b. Max detection range is 12x6m( $\phi$ xh).



Light will dimming to 10%/20%/30%/50%(optional via set key) after the hold time when no object movement within detection ranges.

## Details Demo

Tri-Color & DIP  
Switch Power  
Adjustment  
Optional>>>



1/2 Al Housing +  
1/2 PC  
Cover,Excellent  
Thermal  
Conductivity>>>



High Capacity  
LiFePO4  
Battery,5W@3  
Hrs Emergency  
Time, 1,000  
Cycles  
Charging/Dis-  
charging  
Time>>>



Input Power  
Cable from the  
Back Optional>>>



Linkable  
Through Double  
End Wiring>>>



Linkable  
Through Single  
End Wiring>>>



## Application Reference

